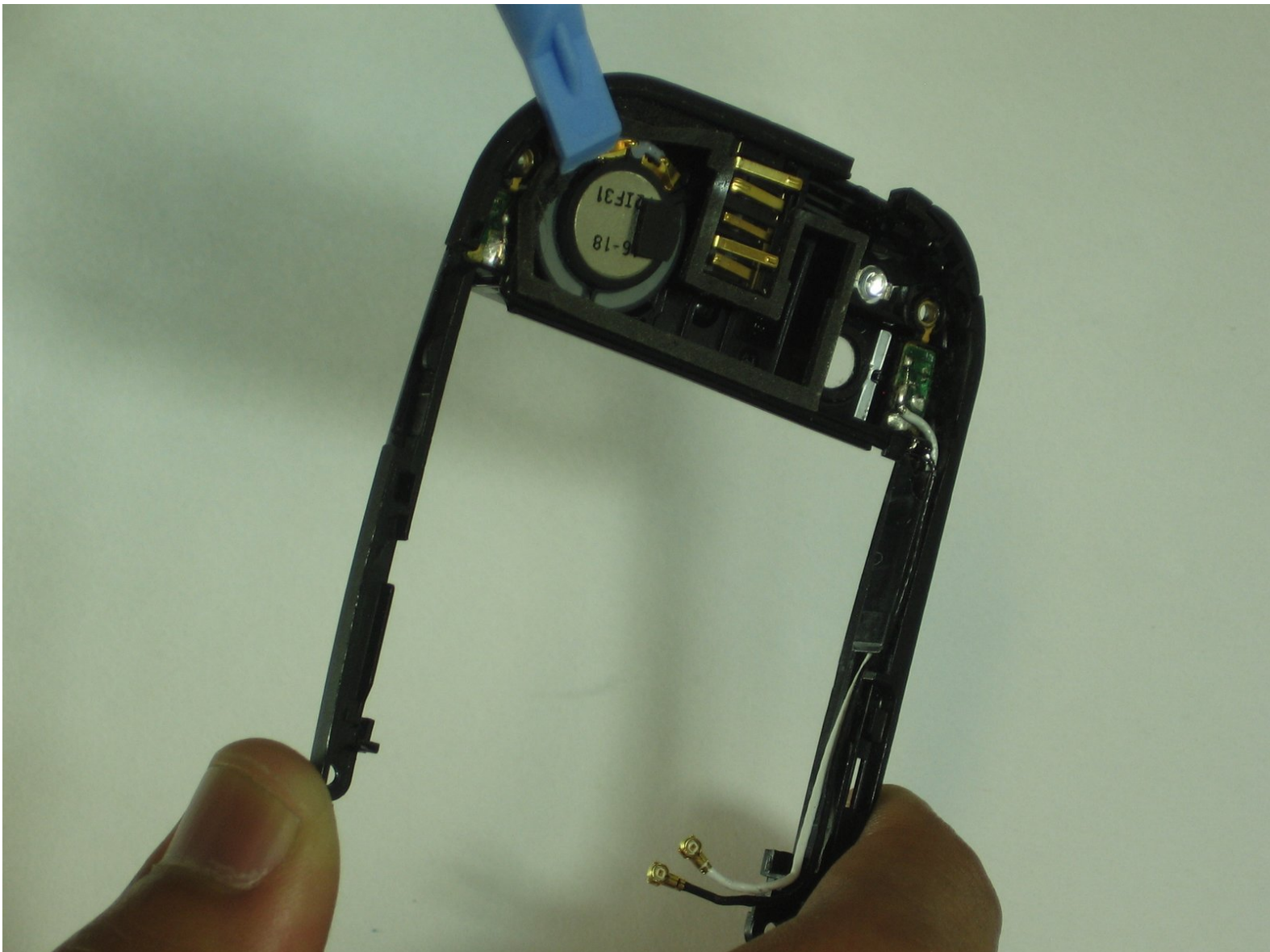




Palm Pre Antenna Replacement

How to replace the GPS and DIV antennas. This guide will be useful if your GPS is malfunctioning.

Written By: noha





TOOLS:

- [Soldering Workstation](#) (1)
- [Spudger](#) (1)
- [T4 Torx Screwdriver](#) (1)
- [Tweezers](#) (1)

Step 1 — Battery



- Make sure your Palm Pre is turned off before disassembling the phone.
- Snap off the back panel to reveal the battery.

Step 2



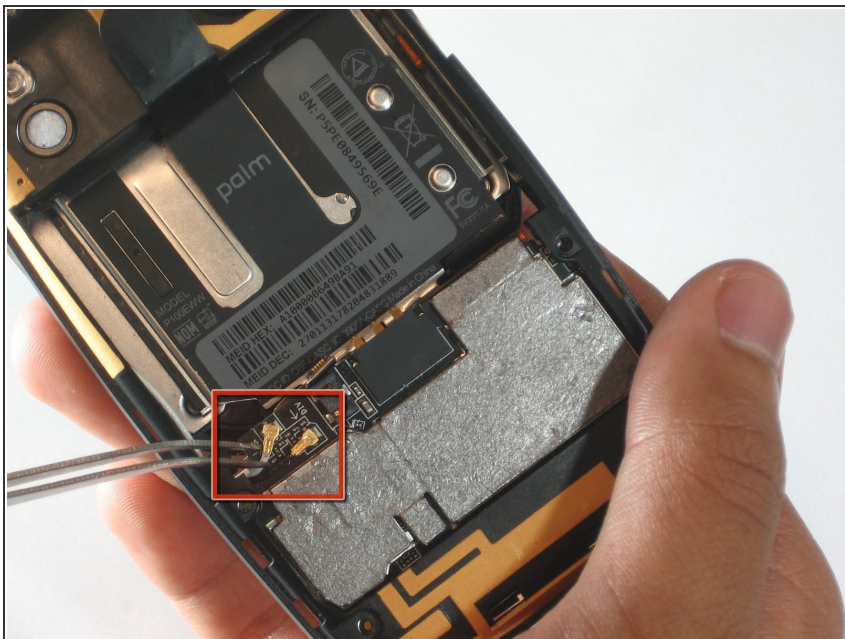
- Carefully pull up on the tab to remove the current battery.

Step 3 — Antenna



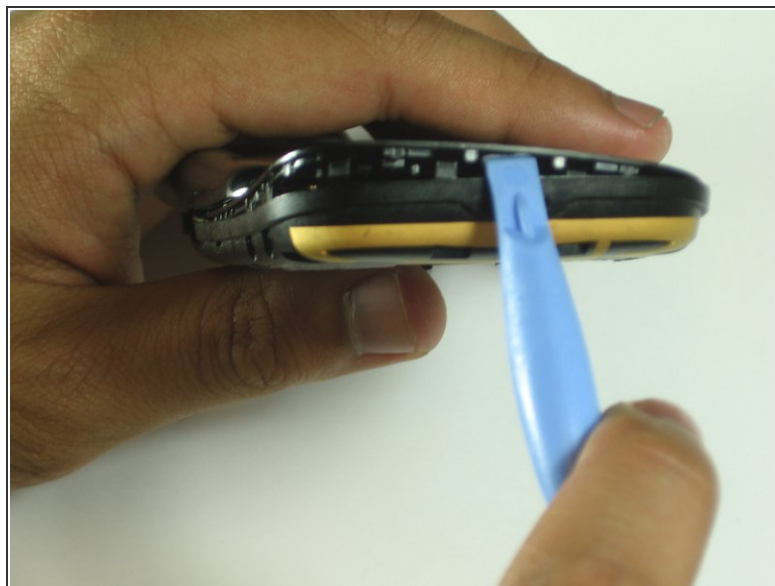
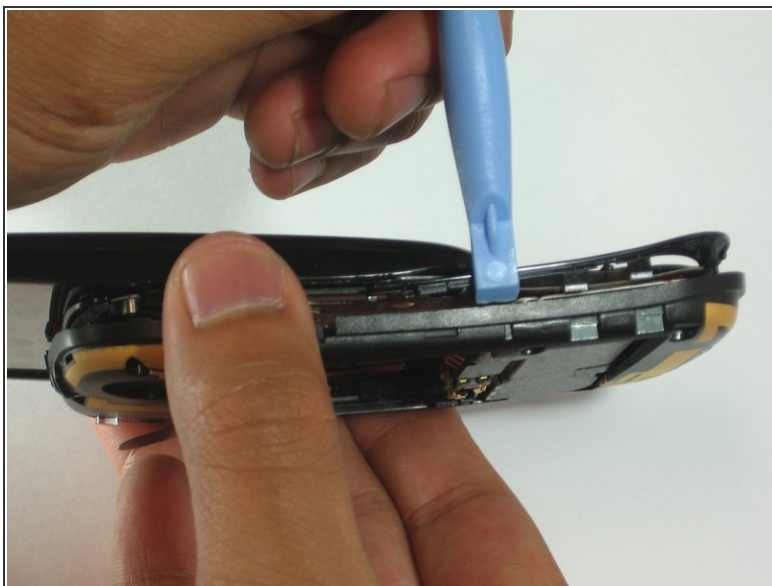
- Use the T5 Torx Screwdriver to remove the six screws holding the backing frame in place.

Step 4



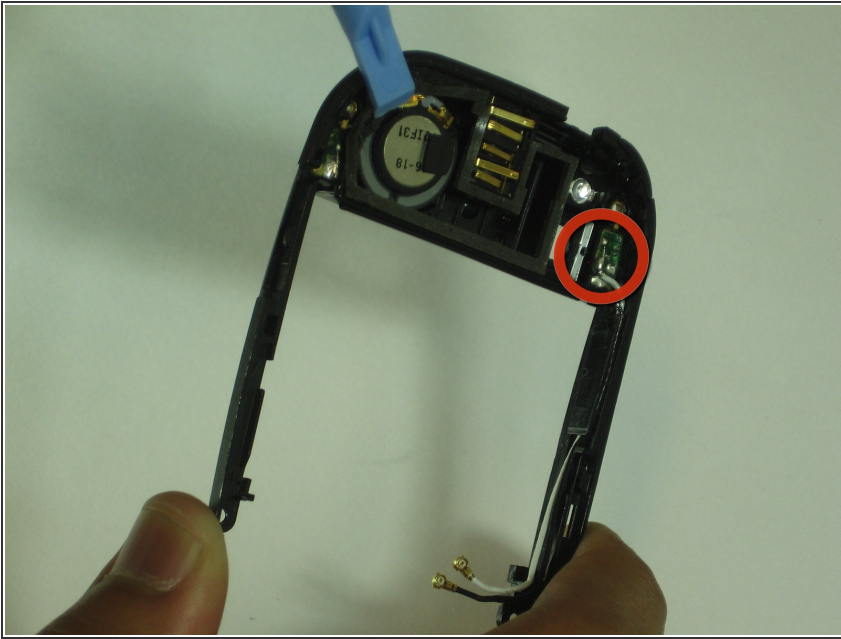
- Locate the hinge that covers the black and white GPS and DIV antennas. (The hinge will be located in the red box as portrayed in the picture.)
- Use a spudger to pry open the hinge.
- Use tweezers to disconnect the antennas from the keypad control board.

Step 5



- Use a spudger to pry off the (black and yellow) back frame.
- ❗ Disregard the main part of the phone at this point and look only at the inside of the removed back frame. (You will need the main part of the phone for access to the keyboard and motherboard)

Step 6



- Find the small circuit board at the top right and desolder the wires that are connected to it.
- ⓘ This step is only necessary for antenna removal.

To reassemble your device, follow these instructions in reverse order.